

**P. B. ROBARDS**  
COLLEGE BOYS' TAILOR  
DRY CLEANING PRESSING ALTERING  
Phone 929 216 S. Limestone

**RENT A  
NEW  
Dodge - Ford - Truck**

Our Service is unequalled. It includes  
All New Cars,  
Balloon Tires,  
Locked Steering Wheels  
Wind-shield Wipers  
Spare Tires—no waits for a new tire.  
Free Road Service  
and  
the courtesy and careful attention of real friends..

**The Storey-Rent-a-Ford Co.**

Phone 6120 Lafayette-Phoenix Garage  
Operated BY College Men FOR College Men.



**SKILLED WORKMEN**  
are employed on your shoes here. They use the best of leathers and thread. These two factors added to up-to-date machinery combine to give you a job in shoe repairing that you may well be proud of.

**NEW YORK HAT CLEANING  
and  
SHOE SHINE PARLOR**

For Students  
Have your Hat Reshaped and Cleaned for Spring  
Suits Pressed While You Wait 35c  
Suits Cleaned and Pressed 75c  
Shoe Repairing

Phone 3725-X 112 West Main

**University Lunch Room**

FIRST IN SERVICE  
FIRST IN SANDWICHES  
QUALITY AND QUANTITY

Hours 6:00 to 12:30

**WM. POULOS, Proprietor**

**PARRISH & BROMLEY**  
DRY CLEANING AND PRESSING  
152 South Lime Phone 1550  
Quality and Service

**GET BUSY BOYS!  
BASEBALL DAYS ARE HERE**

Come to us for all  
Baseball Accessories and Tennis Goods

**VanDeren Hardware Co.**

Incorporated  
340 W. Main Street

**DR. FUNKHOUSER  
GIVES ADDRESS**

**Tells of Sand Cave at  
the Monthly Convocation**

"Sand Cave" was the subject of an address by Dr. W. D. Funkhouser, head of the department of Zoology of the university, at the March convocation of all students Tuesday morning in the basketball auditorium. The largest audience of any of the monthly convocations held this year was present to hear the true account of the tragedy of Floyd Collins from the mouth of one so prominent in the vain effort to save his life.

The huge assemblage sat spell-bound for three-quarters of an hour as Dr. Funkhouser described the tunnel in which Collins was trapped and the many different efforts made to free him. The highest tribute was paid by the speaker to "Bill" McFarland, star tackle on the 1923 Wildcat football team and now a student at Western Kentucky Normal School, and to other men who worked so zealously to rescue the entombed man.

A trio from the Women's Glee Club rendered a selection that received hearty applause. The meeting was opened by the Reverend Hay Ferris of the Woodland Christian Church, who asked the invocation. The benediction was pronounced by the Reverend T. C. Ecton of the Calvary Baptist Church.

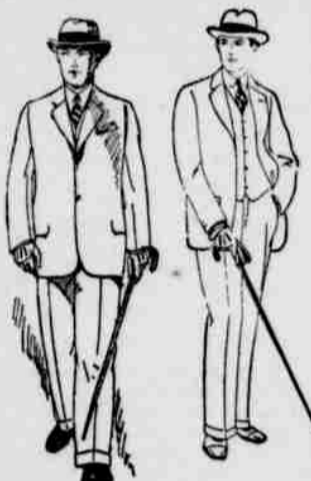
Judge Florence Allen, of the Supreme Court of Ohio will be the speaker at the April convocation, according to announcement made by Dr. McVey Tuesday.

**SIGMA RHO INITIATES  
TEN MINING ENGINEERS**

Gamma chapter of Sigma Rho, national fraternity of Mining Engineers, Metallurgists and Geologists, announces the initiation of the following men: Prof. T. J. Barr and L. I. Freeman, Lexington; A. G. Hillen, Louisville; William Zopf, Louisville; Louis W. Voiers, Butler; Ted R. Creech, Pineville; G. F. Justice, Middleboro; Henry C. Cogswell, O. M. Johnson, G. H. Bright, Lexington.

The members of the active chapter are: E. J. Davis, Oscar Bishop, G. D. Gatton, Samuel Cassidy, Wallace C. Riley, Thomas Armstrong and Professors C. S. Crouse and M. W. Beebe.

LOST—Small gold pencil with initials "M. E. B." Return to Dean Melcher's office and receive reward.



**Goldberg's**

HERE'S THE REASON WHY YOU  
CAN BUY FOR LESS AT  
GOLDBERG'S

We are the largest tailors in Kentucky. The same skilled tailors that make our custom clothes tailor our ready-to-wear clothes.

No Middleman's Profit  
One and Two  
Pants SUITS \$24<sup>75</sup>  
Topcoats  
Compare—You'll Buy  
(In all sizes 32 to 48)

GIVING more than is expected has been our policy for a great many years. It is causing thousands to change to GOLDBERG'S Ready-to-Wear Suits and Topcoats each year. Before purchasing your next ready-to-wear Suit and Topcoat it will pay you to call at our store.

**GOLDBERG'S**

"Always Ahead  
Always Pushing"  
LEXINGTON'S LEADING TAILORS  
READY-TO-WEAR CLOTHIERS  
Est. 1898

Branch Store of Louisville

333 WEST MAIN

**MED. FRATERNITY  
INITIATES 6 MEN**

**Phi Beta Chi Gives Banquet in Honor of New Men**

Phi Beta Chi, medical fraternity, initiated six men last Friday evening. The initiation ceremonies were held on the campus, followed by a banquet at the Phoenix hotel.

The men initiated were: C. B. Shacklette, J. L. Keys, H. H. Willis, Ward Bushart, Norris Duvall and R. K. Flege.

The active members of the fraternity are: Grandison McLean, Glynn Bushart, Cecil Charles, Glenn Dorrah, David McIntyre, Russell Teague, J. C. Covington and William McGehee.

The honorary members are: Dr. J. W. Pryor, Dr. W. D. Funkhouser, Dr. W. N. Lipscomb and Dr. J. E. Rush.

**ROMANY TO GIVE "THE  
ENCHANTED COTTAGE"**

(Continued from Page One)

Oskar Hambleton will carry the masculine lead as Oliver Bashforth. The feminine lead will be carried by Miss Violet Young, who will take the part of Laura Pennington. Miss Young appeared at the Romany last year in "Lilom," "Intimate Strangers" and in "The Merry Game."

The part of Mrs. Smallwood, Bashforth's mother, will be played by Miss Margot Semmes, the guest of Miss Betsy Cloud. H. B. Carpenter, a senior in the college of Engineering, will carry the role of Rupert Smallwood, her husband.

The part of Major Murray Hillgrove will be taken by Churchill Newcomb, managing editor of the "Chase" magazine, who has had experience with the Harvard Players. The Rev. Charles Correll will be represented by Luke Woolridge of Louisville, a freshman at the university. The part of Mrs. Correll will be taken by Miss Margaret Woolridge, who has appeared with the Louisville Players and who was to have carried a role in "White Chips," but illness prevented her taking the part.

Miss Ann Callihan, acting head of the art department, will appear as Mrs. Minett. Miss Callihan is in charge of the stage setting, which is being executed by Henry Harper, William Burks, Guy Briggs, Grant Willis and Bob Kay.

The dream characters will be portrayed by Misses Alice Bell Halley, Fannie Bruce Loughridge, Elizabeth Pemberton of Winchester, and Messrs. James Cogar of Midway, William Pettie and James Davidson.

There will be a musical theme running throughout the play, directed by Mr. Cromwell Allen of Morganfield, assisted by Miss Jeanette Lampert on the violin.

**Announcing  
THE OPENING  
of**

**The Parisian  
Ice Cream  
Plant**

Which will enable us to give a more excellent variety of French dainties.

As an  
INTRODUCTORY  
OFFER

Today from 4 to 8 we will serve to our patrons this delicious French ice cream.

**FREE**

**PARISIAN  
PASTRY  
COMPANY**

South Lime Near High

**The Campus Rendez-vous?**

**THE TAVERN**

Meals Sandwiches  
Sodas Tobaccos Magazines

Lime at Pine

Phone 2386

Raymond Ellison

Bruce Fuller

**You Dress Shirt and Collar**

Will Look and Feel Better

IF

**LAUNDERED**

BY THE

**Lexington Laundry Co.**  
PHONE 62

**As You Like It Tea Shop**

149 South Lime

Telephone 5822-x

SERVING HOURS

12:00—2:00

5:30

7:30

"Watch your Watch"

Phone 2682

**R. W. SMOCK**

CAREFUL WATCH REPAIRING

Satisfaction Guaranteed

Formerly with  
Caskey Jewelry Co.

157 South Lime  
Lexington

*For Young Men*  
There is nothing like a  
**STETSON**

**M**OST young men today know the importance of looking fit. Good appearance counts much in the game of life. The young man who dresses with taste has a decided advantage.

But—it is surprising how little thought the average man gives to his hat. It is his crown, yet he seems to stop dressing at the neck.

Be careful in your selection of your headwear. When you buy a hat, select a Stetson. Its style is right, its quality means long wear.